

Hi-Tide

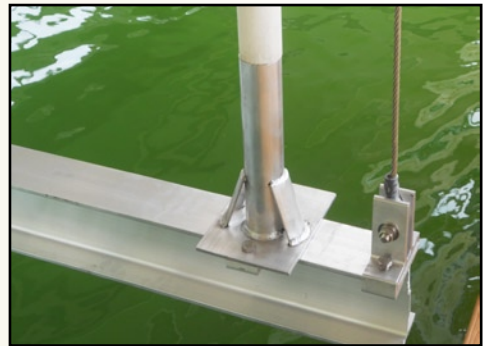
Gear Drive Boathouse Lift

Capacity: 4,000 lbs to 10,000 lbs



FEATURES

- Sealed aluminum Hi-Tide Gear Drive® gear box is standard on this lift for efficient, quiet and fast performance
- Fully adjustable design allowing Top Beams and Lifter Beams to be field cut for that perfect customized fit
- All marine-grade aluminum and stainless steel construction
- Slide-On Pulleys and Dead-man brackets
- Welded construction throughout
- Stainless steel electric motors
- Machined aluminum cable winders are standard (extends cable and driveshaft life)
- Aluminum pulleys
- Ten-year structural warranty
- Five-year gear box warranty
- Two-year motor warranty
- One-year comprehensive warranty



OPTIONS AND ACCESSORIES

- Center Shaft
- Remote Control
- Limit switch



180 Birmingham Rd | Eclectic, AL 36024

Ph: 334.857.2443 | Fx: 334.857.2550

Email: sales@lakemartindock.com

www.lakemartindock.com

SPECIFICATIONS FOR THE GEAR DRIVE BOAT HOUSE LIFT

All specifications subject to change without notice.
Consult with Hi-Tide for X2 electrical specifications.

STRUCTURAL SPECIFICATIONS FOR THE GEAR DRIVE BOAT HOUSE LIFT										
LIFT MODEL	STAINLESS STEEL CABLE*	WINDER	TRAVEL	SPEED	MOTOR	REQUIRED VOLTS/AMPS	LIFTER BEAM	TOP BEAM	WOOD BUNKS	GUIDE POLE WEIGHT PIPE
4,000 LB - SINGLE PART	1/4" x 25' & 35'	2" x 20" L/R	16'	40"/min	1/2 hp	120V/15A 240V/15A	6" x 12'	6" x 14"	2" x 8" x 12'	2" x 6'-8" 1-1/2" x 50"
8,000 LB - 2-PART	1/4" x 35' & 45'	2" x 20" L/R	8'	20"/min	3/4 hp	120V/15A 240V/15A	6" x 13'	6" x 15"	2" x 8" x 12'	2" x 6'-8" 1-1/2" x 50"
8,000 LB - SINGLE PART TWO MOTOR	5/16" x 25'	2" x 16" std.	23'	40"/min	(2) 1 hp	240V/15A	6" x 13'	6" x 15"	2" x 8" x 12'	2" x 6'-8" 1-1/2" x 50"
10,000 LB - 2-PART TWO MOTOR	1/4" x 45'	2" x 16" std.	13'	20"/min	(2) 1/2 hp	120V/15A 240V/15A	6" x 13'	6" x 15"	2" x 8" x 12'	2" x 6'-8" 1-1/2" x 50"

*Center shaft option changes cable lengths on single motor lifts, contact Hi-Tide Sales as necessary for proper cable lengths for excessively high boat houses.